

Electrical/electronic components (ITT Mark 60 IE) ABS, ABS/EDL/ASR/ESP

1. ABS hydraulic unit (N55)

- Located on left side of engine compartment
- Hydraulic pump (V64) integral with valve block and inlet/outlet valves
- Do not separate above components from each other
- Identification, see **ABS, hydraulic unit identification**

2. ABS control module (J104)

- Located on hydraulic unit
- New control modules (replacement parts) are not coded and must be coded after installation
- Disconnect harness connector only with ignition switched off
- Tighten mounting bolt to hydraulic unit to 4 Nm (35 in-lb)

3. Rotational rate sensor (G202)

- For vehicles with ESP
- Located on steering column

4. Transverse acceleration sensor (G200)

- For vehicles with ESP
- Located on steering column

5. Longitudinal acceleration sensor (G251)

- For vehicles with ESP
- For all wheel drive vehicles with Haldex coupling only
- On lower right side A pillar

6. ESP sensor (G419)

- For vehicles with ESP from February 2002 production
- Combines sensors G200, G202, and G251 (as applicable) in one housing
- Located on steering column

7. Brake pressure sender I (G201)

- Located under master cylinder

8. Power brake booster

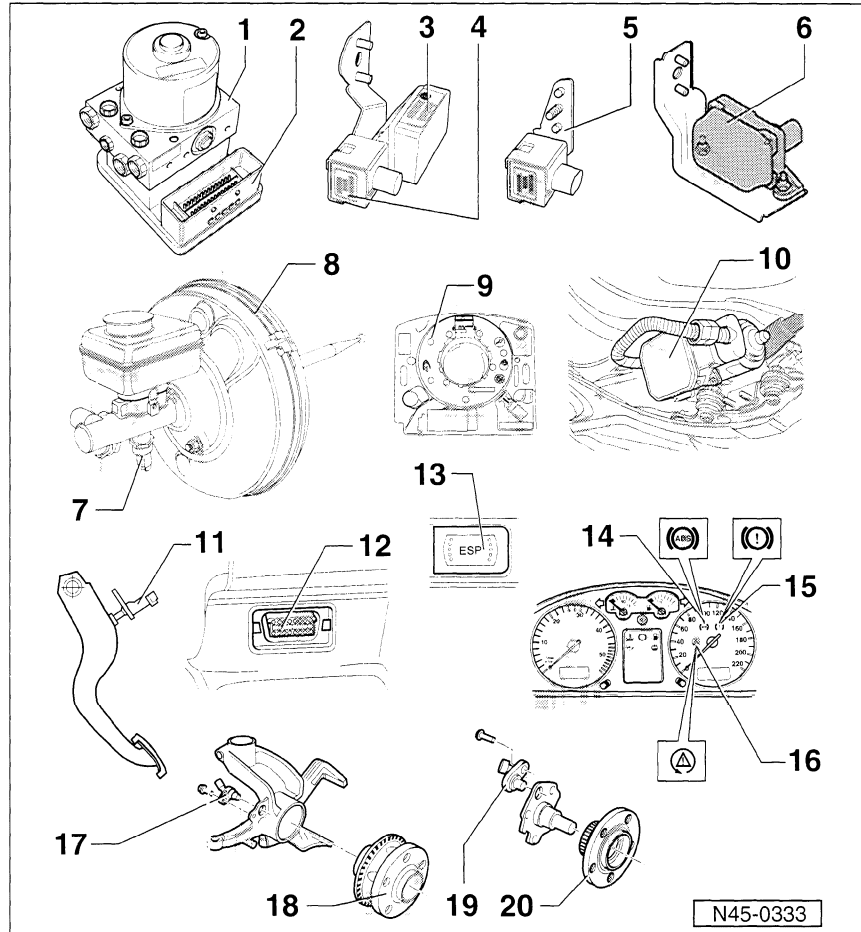
9. Steering angle sensor (G85)

- For vehicles with ESP
- On steering column under wheel

10. Brake system vacuum pump (V192)

- On lower left subframe

11. Brake light switch (F)



12. Data Link Connector (DLC)

- In left lower area of dash panel

13. ESP control switch (E256) or ASR control switch (E132)

- For vehicles with ESP or ASR
- Located in center of dash panel

14. ABS warning light (K47)

- Located in instrument cluster

15. Brake system warning light (K118)

- Located in instrument cluster

16. ASR/ESP control light (K155)

- Located in instrument cluster

17. ABS wheel speed sensors, right front (G45), left front (G47)

- Clean inner surface in wheel bearing housing before installation and lubricate with special grease (VW G 000 650 or equivalent)
- Check to be sure wiring is not twisted in wheel well before connecting
- Tighten mounting bolt to 10 Nm (89 in-lb)

18. Wheel hub with ABS wheel speed sensor rotor, front

- Rotor and speed sensors for left and right rear sides are identical
- Rotor is integral with wheel hub

19. ABS wheel speed sensors, right rear (G44), left rear (G46)

- Clean inner surface in wheel bearing housing before installing and lubricate with grease (VW part no. G 000 650 or equivalent)
- Check to be sure wiring is not twisted in wheel well before connecting
- Tighten mounting bolt to 10 Nm (89 in-lb)

20. Wheel hub with ABS wheel speed sensor rotor, rear

- Rotor and speed sensors for left and right rear sides are identical
- Rotor welded to wheel hub