

2002 ENGINE PERFORMANCE

General Motors Introduction - Cars

2002 MODEL COVERAGE

MODEL	BODY CODE	ENGINE (RPO CODE) ⁽¹⁾	ENGINE ID	FUEL SYSTEM	IGNITION SYSTEM
Alero	N	2.2L (L61)	F	SFI	DIS
.....	3.4L (LA1)	E	SFI	DIS
Aurora	G	3.5L (LX5)	H	SFI	DIS
.....	4.0L (L47)	C	SFI	DIS
Bonneville	H	3.8L (L36)	K	SFI	DIS
.....	3.8L (L67)	I	SFI ⁽²⁾	DIS
Camaro	F	3.8L (L36)	K	SFI	DIS
.....	3.7L (LS1)	G	SFI	DIS
Cavalier	J	2.2L (LN2)	4	SFI	DIS
.....	2.2L (L61)	F	SFI	DIS
.....	2.2L (LN2/KL6) ⁽²⁾	4	SFI	DIS
.....	2.4L (LD9)	T	SFI	DIS
Century	W	3.1L (LG8)	J	SFI	DIS
Corvette	Y	5.7L (LS1)	G	SFI	DIS
.....	5.7L (LS6)	S	SFI	DIS
DeVille	K	4.6L (LD8)	Y	TPI-SFI	DIS
.....	4.6L (L37)	9	TPI-SFI	DIS
Eldorado	E	4.6L (LD8)	Y	TPI-SFI	DIS
.....	4.6L (L37)	9	TPI-SFI	DIS
Firebird	F	3.8L (L36)	K	SFI	DIS
.....	3.7L (LS1)	G	SFI	DIS
Grand Am	N	2.2L (L61)	F	SFI	DIS
.....	3.4L (LA1)	E	SFI	DIS
Grand Prix	W	3.1L (LG8)	J	SFI	DIS
.....	3.8L (L36)	K	SFI	DIS
.....	3.8L (L67)	I	SFI ⁽²⁾	DIS
Impala	W	3.4L (LA1)	E	SFI	DIS
.....	3.8L (L36)	K	SFI	DIS
Intrigue	W	3.5L (LX5)	H	SFI	DIS
LeSabre	H	3.8L (L36)	K	SFI	DIS
Malibu	N	3.1L (LG8)	J	SFI	DIS
Monte Carlo	W	3.4L (LA1)	E	SFI	DIS
.....	3.8L (L36)	K	SFI	DIS
Park Avenue	C	3.8L (L36)	K	SFI	DIS

mecanica

2002 Chevrolet Cavalier LS

2002 ENGINE PERFORMANCE General Motors Introduction - Cars

....	3.8L (L67)	I	SFI ⁽²⁾	DIS
Prizm	S	1.8L (LV6)	K	SFI	DIS
Regal	W	3.8L (L56)	K	SFI	DIS
....	3.8L (L67)	I	SFI ⁽²⁾	DIS
Saturn ("I" Series)	J	2.2L (L61)	F	SFI	DIS
....	3.0L (L81)	R	SFI	DIS
Saturn ("S" Series)	Z	1.9L (L24)	K	SFI	DIS
....	1.9L (LL6)	7	SFI	DIS
Seville	K	4.6L (LD8)	Y	TPi-SFI	DIS
....	4.6L (L37)	9	TPi-SFI	DIS
Sunfire	J	2.2L (LN2)	4	SFI	DIS
....	2.2L (L61)	F	SFI	DIS
....	2.4L (LD9)	T	SFI	DIS

(1) Engine code is stamped on engine block. See **ENGINE CODE LOCATION**.

(2) Supercharged engine.

(3) Flex-fuel engine.

VIN DEFINITION

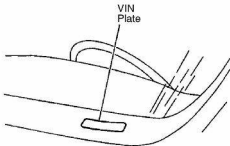
2 G 1 W L 5 2 J X 1 1 2 0 0 0 1
 ① ② ③ ④ ⑤ ⑥ ⑦ ⑧ ⑨ ⑩ ⑪ ⑫ ⑬ ⑭ ⑮ ⑯

- ① Indicates Country Of Origin.
- ② Indicates Manufacturer.
- ③ Indicates Vehicle Division.
- ④ Indicates Car Line Body Code.
- ⑤ Indicates Car Line/Series (Sales Code).
- ⑥ Indicates Body Type.
- ⑦ Indicates Restraint System.
- ⑧ **Indicates Engine ID.**
- ⑨ Indicates Check Digit.
- ⑩ **Indicates Model Year.**
- ⑪ Indicates Assembly Plant.

⑫⑬⑭⑮⑯ Indicates Plant Sequential Number.

G00029224

Fig. 1: VIN Character Position & Definition
 Courtesy of GENERAL MOTORS CORP.



G00057703

Fig. 3: VIN Plate Location

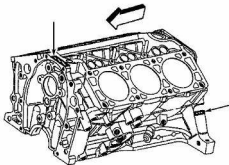
Courtesy of GENERAL MOTORS CORP.

MODEL/YEAR VIN CODE APPLICATIONS**MODEL/YEAR VIN CODE APPLICATIONS**

VIN Code	Model Year
X	1999
Y	2000
1	2001
2	2002

ENGINE CODE LOCATION**NOTE:** For description of engine (RPO) code, see 2002 MODEL COVERAGE table.**LA1 & LC8**

On left side of engine block, on engine-to-transmission mating flange, OR on top front of engine block, near timing chain housing. See Fig. 3.



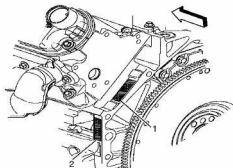
G00057705

Fig. 3: Locating Engine Identification Number (LA1 & LG8)

Courtesy of GENERAL MOTORS CORP.

LS1, LS6 & LS1

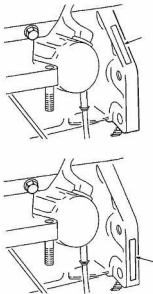
On left side of engine block, on engine-to-transmission mating flange. See [Fig. 4](#) or [Fig. 5](#).



1. Engine ID - Primary Location
2. Engine ID - Secondary Location

G00057708

Fig. 4: Locating Engine Identification Number (LSI & LS6)
Courtesy of GENERAL MOTORS CORP.



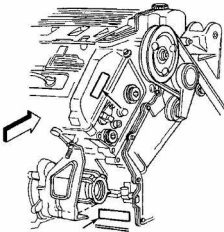
G00087713

Fig. 8: Locating Engine Identification Number (L81)

Courtesy of GENERAL MOTORS CORP.

L08 & L37

On right front side of engine block, on cam cover, **OR** on right front side of engine block, forward of transmission extension. See **Fig. 6**.



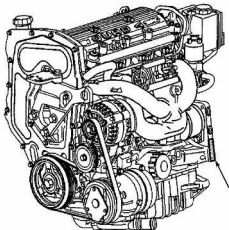
G00057706

Fig. 6: Locating Engine Identification Number (LD8 & L37)

Courtesy of GENERAL MOTORS CORP.

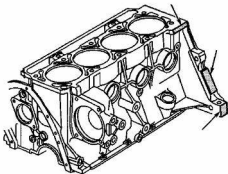
LD9, LN2, LN2/KL6 & L61

On left rear side of engine block. See Fig. 7 or Fig. 8 .



G00057707

Fig. 7: Locating Engine Identification Number (LD99)
Courtesy of GENERAL MOTORS CORP.



G00057704

Fig. 8: Locating Engine Identification Number (LN2, LN2/KL6 & L6I)

Courtesy of GENERAL MOTORS CORP.

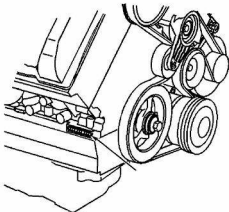
NOTE: Engine ID location illustration for engine codes LL0 & L24 is not available from manufacturer.

LL0 & L24

On left rear side of engine block.

LX5& L47

On right front side of engine block, near oil pan. See [Fig. 9](#).



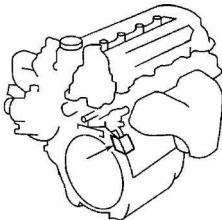
G00057709

Fig. 9: Locating Engine Identification Number (LX5 & L47)

Courtesy of GENERAL MOTORS CORP.

LV6

On right rear side of engine block. See Fig. 10.



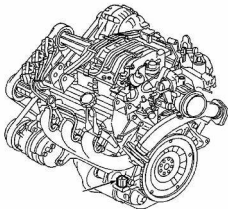
G00057710

Fig. 10: Locating Engine Identification Number (LV6)

Courtesy of GENERAL MOTORS CORP.

L36 & L67

Right rear of engine, under exhaust manifold near bellhousing/engine mating surface. See [Fig. 11](#).



G00057711

Fig. 11: Locating Engine Identification Number (L36 & L67)
Courtesy of GENERAL MOTORS CORP.